



WHERE EVERY SUNRISE FEELS LIKE

A MASTERPIECE

ARTIST'S IMPRESSION

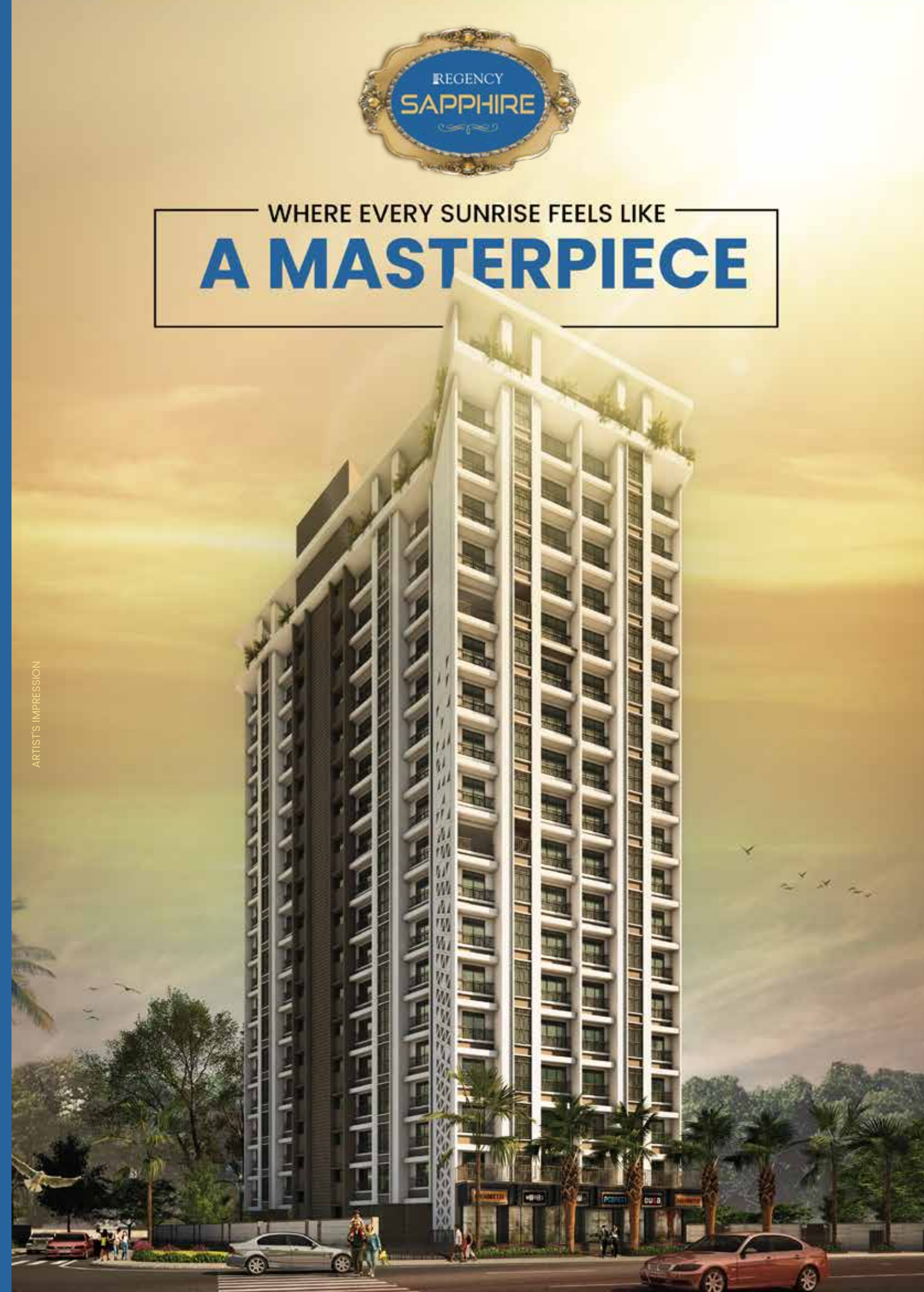


SITE ADDRESS: REGENCY SAPPHIRE, NEAR TO REGENCY ANANTAM, KALYAN - SHIL ROAD, VICCO NAKA, DOMBIVLI (E), 421 203.



REGENCY SAPPHIRE MahaRERA reg. No.: P51700053596 available on website - <https://maharera.mahaonline.gov.in> under registered projects. All transactions in this development shall be subject to and governed by the terms & conditions of the Agreement for Sale to be entered into between the parties. *T & C Apply.

Disclaimer: All the images, pictorials, visuals, elevations, perspectives, illustrations, model, specifications, plans, designs, drawings, dimensions, maps, facilities, amenities, features, and other information/details herein are conceptual, indicative and for representation purpose only and are not to scale, and is subject to the approval of the respective authorities. The Promoters/Developers/Architect reserve the right to add, alter, delete or replace any of these in the interest of the development, without any notice or obligation. This printed material does not constitute an offer or contract of any nature whatsoever between the Promoters/Developers and the recipient. All transactions in this development shall be subject to and governed by the terms & conditions of the Agreement for Sale to be entered into between the parties.



TYPICAL FLOOR PLAN



FLAT NOS 1 TO 7
RERA = 29.95 SQMTS
DRY BALC = 2.04 SQMTS
ENC BALC = 6.60 SQMTS

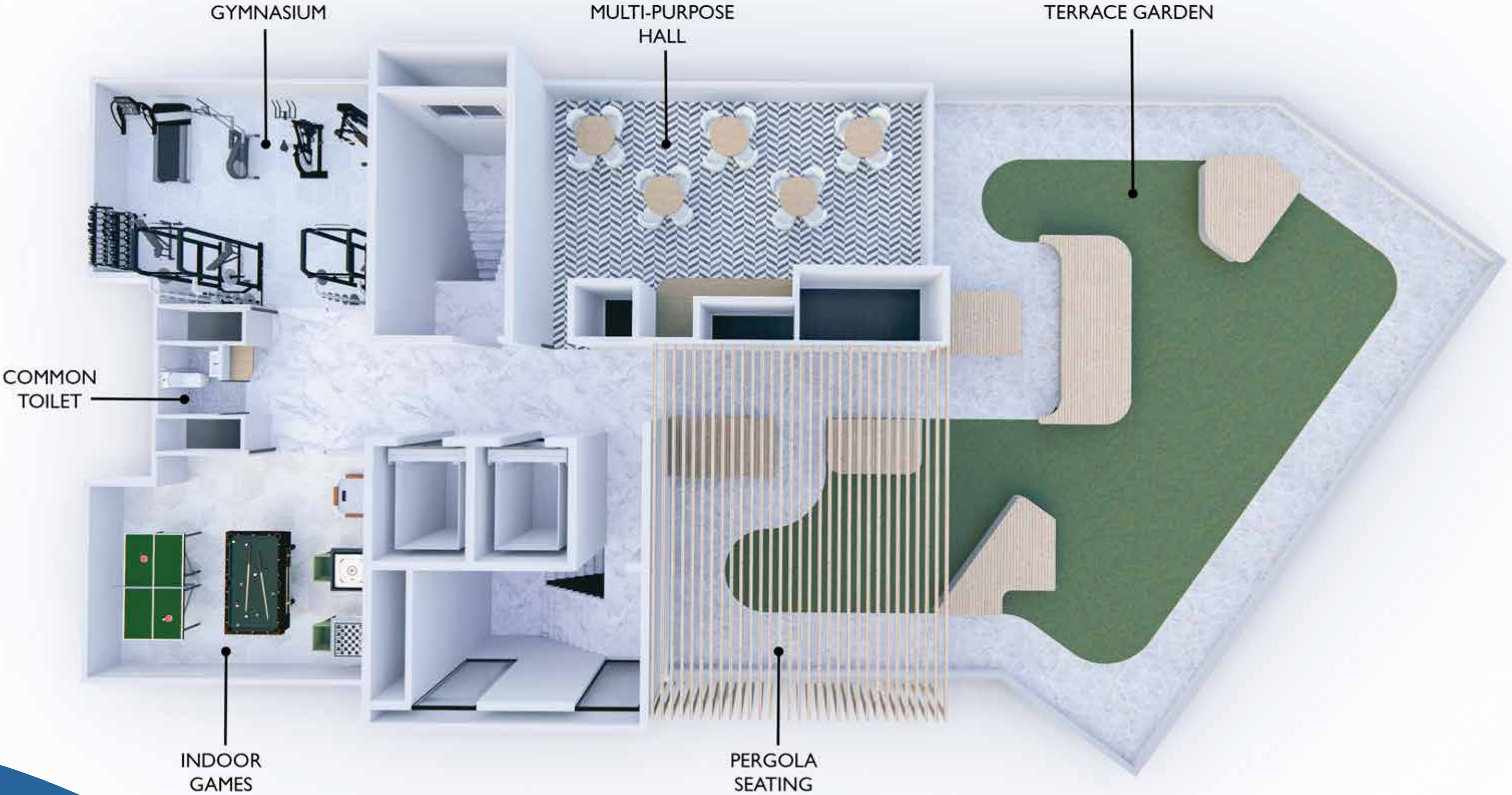
NOTE: LOCATION OF SERVICES SHOWN IN FLOOR MAY CHANGE AS PER REQUIREMENTS



3D UNIT PLAN



EXCEPTIONAL LIVING WITH SAPPHIRE'S EXCLUSIVE AMENITIES



ENHANCING THE SKYLINE BY CREATING INSPIRING LIFESTYLE DESTINATIONS

Regency Group takes pride in offering benchmark quality, timely completion of projects, and enriched lifestyles along with transparency, which has established its credentials across the length and breadth of the real estate vertical.

21+

YEARS OF LEGACY

13+

MILLION SQ.FT. DEVELOPED

20

DELIVERED PROJECTS

17000+

HAPPY FAMILIES

LOCATION MAP

